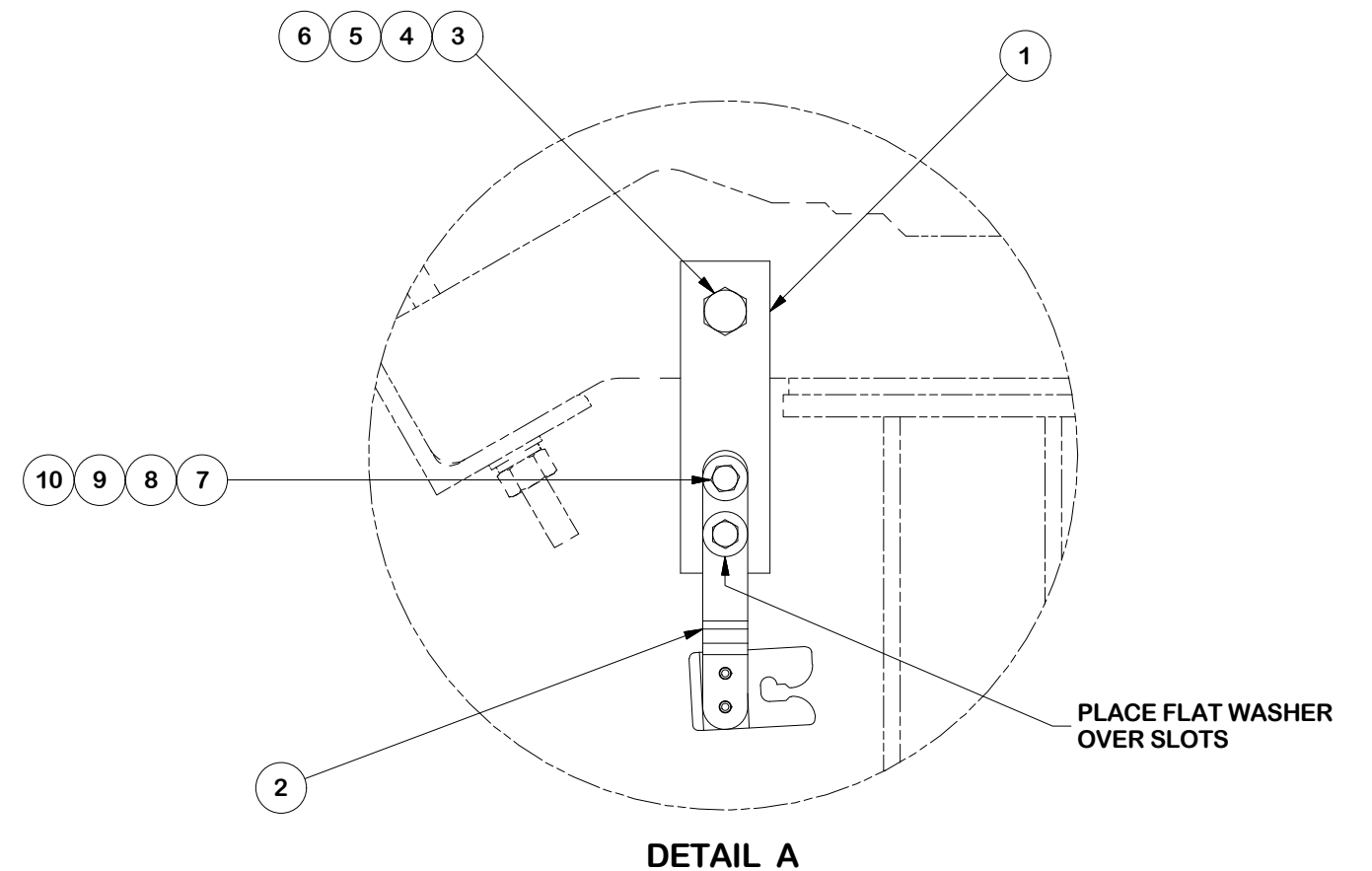


**NOTE:**  
 SAFETY CLIMB GUIDE MAY BE INSTALLED ON EITHER LEFT OR RIGHT SIDE OF THE RING MOUNT, DEPENDING ON WHERE THE EXISTING SAFETY CLIMB IS LOCATED. REFER TO MOUNT MODIFICATION DRAWINGS FOR PLACEMENT.

PARTS LIST						
ITEM	QTY	PART NO.	PART DESCRIPTION	LENGTH	UNIT WT.	NET WT.
1	1	TMP-2	7" SAFETY CLIMB BRACKET	7 in	1.00	1.00
2	1	115-203	LADDER MOUNT CABLE GUIDE		1.80	1.80
3	1	A5802	5/8" x 2" HDG A325 HEX BOLT		0.27	0.27
4	1	G58FW	5/8" HDG USS FLATWASHER	1/8 in	0.07	0.07
5	1	G58LW	5/8" HDG LOCKWASHER		0.03	0.03
6	1	G58NUT	5/8" HDG HEAVY 2H HEX NUT		0.13	0.13
7	2	G38112	3/8" x 1-1/2" HDG HEX BOLT GR5		0.07	0.14
8	2	G38FW	3/8" HDG USS FLATWASHER		0.01	0.02
9	2	G38LW	3/8" HDG LOCKWASHER		0.01	0.01
10	2	G38NUT	3/8" HDG HEAVY 2H HEX NUT		0.03	0.07
<b>TOTAL WT. #</b>						<b>3.54</b>



**TOLERANCE NOTES**

TOLERANCES ON DIMENSIONS, UNLESS OTHERWISE NOTED ARE:  
 SAWED, SHEARED AND GAS CUT EDGES ( $\pm 0.030"$ )  
 DRILLED AND GAS CUT HOLES ( $\pm 0.030"$ ) - NO CONING OF HOLES  
 LASER CUT EDGES AND HOLES ( $\pm 0.010"$ ) - NO CONING OF HOLES  
 BENDS AND ANGLES ARE  $\pm 1/2$  DEGREE  
 ALL OTHER MACHINING ( $\pm 0.030"$ )  
 ALL OTHER ASSEMBLY ( $\pm 0.060"$ )

PROPRIETARY NOTE:  
 THE DATA AND TECHNIQUES CONTAINED IN THIS DRAWING ARE PROPRIETARY INFORMATION OF VALMONT INDUSTRIES AND CONSIDERED A TRADE SECRET. ANY USE OR DISCLOSURE WITHOUT THE CONSENT OF VALMONT INDUSTRIES IS STRICTLY PROHIBITED.

DESCRIPTION  
**SAFETEY CLIMB GUIDE BRACKET RING MOUNT ATTACHMENT**

CPD NO.	DRAWN BY <b>CMFL 6/10/2021</b>	ENG. APPROVAL
CLASS <b>87</b>	SUB <b>02</b>	DRAWING USAGE <b>CUSTOMER</b>
CHECKED BY		



Engineering Support Team:  
 1-888-753-7446

Locations:  
 New York, NY  
 Atlanta, GA  
 Los Angeles, CA  
 Plymouth, IN  
 Salem, OR  
 Dallas, TX  
 Tampa, FL

PART NO. <b>SCGB-RM</b>	PAGE 1 OF 1
DWG. NO. <b>SCGB-RM</b>	